

Figure 1. Comparison of Age-group of Father and Mother During Child's Birth:

JANUARY-DECEMBER 2016

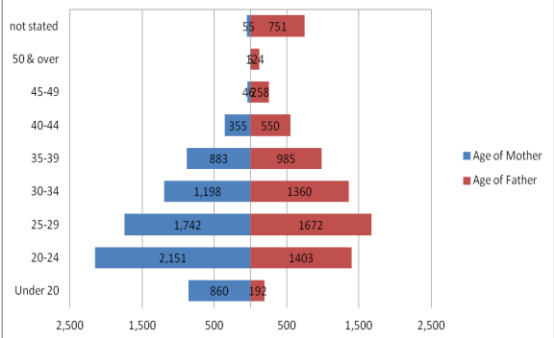
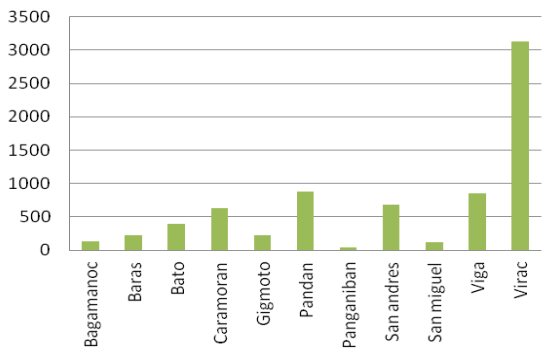


CHART ANALYSIS

Of the total 7, 295 registered births in the province of Catanduanes for January-December 2016, most were born from a mother aged 20 to 24 wherein it contributed 29 percent of the total child birth or 2, 151. Fathers with age 25-29 contributed the most with 1, 672 or 23%.

Mothers aged 25-29 came in second with 1, 742 or 24% and Fathers aged 20-24 with 1, 403 or 19%.

Figure 2: Number of Registered Births by Municipality: JANUARY-DECEMBER 2016



Most births were recorded in the municipality of Virac with 3, 126 registered births for January-December 2016 or almost 43 percent of the total.

The municipalities of Pandan, Viga, and San Andres ranked in second, third and fourth respectively. These three municipalities mentioned contributed 32 percent of total child birth. Panganiban (Payo) contributed the least with 46 recorded births or only 0.01 percent.

FOR INQUIRIES:



Philippine Statistics Authority

2nd Floor P. Araojo Building
Cavinitan, Virac, Catanduanes

(63) 920-9681-179 (Smart)

E-mail address: psa_cat@yahoo.com.ph



Philippine Statistics Authority
Catanduanes Provincial Statistical Office

**LIVE BIRTH
STATISTICS
Catanduanes: 2016**



Table 1. Age-group of Mother during Child's Birth by Municipality, Catanduanes: 2016

| Age-Group | Catanduanes | Bagamanoc | Baras | Bato | Caramoran | Gigmoto | Pandan | Panganiban | San Andres | San Miguel | Viga | Virac |
|--------------|-------------|------------|------------|------------|------------|------------|------------|------------|------------|------------|------------|-------------|
| Under 20 | 860 | 6 | 16 | 29 | 67 | 32 | 131 | 2 | 85 | 7 | 110 | 375 |
| 20-24 | 2151 | 45 | 63 | 126 | 186 | 65 | 251 | 12 | 215 | 46 | 238 | 904 |
| 25-29 | 1742 | 26 | 55 | 106 | 152 | 49 | 194 | 13 | 172 | 27 | 194 | 754 |
| 30-34 | 1198 | 25 | 41 | 61 | 105 | 27 | 124 | 7 | 98 | 21 | 140 | 549 |
| 35-39 | 883 | 14 | 24 | 36 | 80 | 32 | 95 | 8 | 68 | 15 | 110 | 401 |
| 40-44 | 355 | 10 | 12 | 18 | 35 | 8 | 64 | 3 | 35 | 4 | 39 | 127 |
| 45-49 | 46 | 0 | 2 | 5 | 4 | 2 | 8 | 0 | 5 | 2 | 9 | 9 |
| 50 & over | 5 | 0 | 0 | 0 | 0 | 1 | 3 | 0 | 0 | 0 | 0 | 1 |
| not stated | 55 | 1 | 14 | 11 | 1 | 5 | 4 | 1 | 2 | 3 | 7 | 6 |
| Total | 7295 | 127 | 227 | 392 | 630 | 221 | 874 | 46 | 680 | 125 | 847 | 3126 |

Table 2. Registered Births, Child Status and Attendant at Birth, Catanduanes: 2016

| Province/ Municipality | Child's Status | | | Attendant at Birth | | | | |
|------------------------|----------------|-------------|--------------|--------------------|-----------|-------------|-------------|-----------|
| | Total | Legitimate | Illegitimate | Physician | Nurse | Midwife | Hilot | Others |
| Catanduanes | 7295 | 2631 | 4664 | 3068 | 75 | 2451 | 1690 | 11 |
| Bagamanoc | 127 | 51 | 76 | 0 | 0 | 45 | 82 | 0 |
| Baras | 227 | 82 | 145 | 116 | 0 | 10 | 101 | 0 |
| Bato | 392 | 150 | 242 | 269 | 0 | 43 | 80 | 0 |
| Caramoran | 630 | 178 | 452 | 87 | 73 | 82 | 388 | 0 |
| Gigmoto | 221 | 68 | 153 | 109 | 0 | 13 | 97 | 2 |
| Pandan | 874 | 319 | 555 | 527 | 1 | 92 | 254 | 0 |
| Panganiban | 46 | 14 | 32 | 10 | 0 | 1 | 34 | 1 |
| San andres | 680 | 214 | 466 | 329 | 0 | 89 | 262 | 0 |
| San miguel | 125 | 59 | 66 | 33 | 0 | 21 | 71 | 0 |
| Viga | 847 | 299 | 548 | 609 | 1 | 29 | 204 | 4 |
| Virac | 3126 | 1197 | 1929 | 979 | 0 | 2026 | 117 | 4 |