



## ***SPECIAL RELEASE***

\*\*\*\*\*

### ***CONSUMER PRICE INDEX FOR ALL INCOME HOUSEHOLDS IN CATANDUANES: JUNE 2018***

**Date of Release:** July 25, 2018  
**Reference No.** 2018-012

#### **PRICE SITUATION: Year-on-Year**

##### **Inflation Rate (IR) in Catanduanes is at 7.0 in June 2018**

The Inflation Rate (IR) in the province of Catanduanes for June 2018 settled at 7.0 percent which translates to a Purchasing Power of the Peso of P 0.60. It was higher by 3.6 points than the registered inflation rate of 3.4 at the same period last year.

The CPI for all Income Households in all items in Catanduanes for the month of June 2018 was registered at 167.1 index points which is higher than last month's registered index points of 166.4. It is also higher than the 156.2 price index points registered at the same period last year.

#### **PRICE SITUATION: Month-on-Month**

##### **Sugar, Jam, Honey, Chocolate and Confectionery commodity group has the highest increase in CPI for June 2018**

The Food and Non-Alcoholic Beverages commodity group recorded a 175.1 price index points during the month of June 2018 which is higher than the last month's recorded price index points of 174.5. Sugar, Jam, Honey, Chocolate and Confectionery commodity group had the highest increase in CPI recorded at 5.30 price index points. Other commodity groups that recorded increase during the month were Fish (1.66%); Fruit (1.53%); Oils and Fats (1.49%); Other Cereals, Flour, Cereal Preparation, Bread, Pasta and Other Bakery Products (0.72%); Milk, Cheese and Eggs (0.71%); and Non-alcoholic Beverages (0.21%).

##### **Vegetables commodity group has the highest decline in CPI in June 2018**

CPI for Vegetable commodity group in June 2018 had the highest decrease recorded at 0.81 price index points. Other commodity groups that experienced decrease in price index points during the month were Food Products N.E.C. (0.69%); Meat (0.63%); Rice (0.36%); and Bread and Cereals (0.05%).

Commodity groups that did not experience any change in price index points for June 2018 were Corn.

##### **Alcoholic, Beverages and Tobacco commodity group experience increased in CPI for June 2018**

CPI for Alcoholic, Beverages and Tobacco commodity group in June 2018 recorded an increase of 0.35 price index points during the month.

##### **Education commodity group headlines non-food commodity groups that experience increase in CPI in June 2018**

Non-food Commodity Groups that recorded an increase in price index points during the month were Education (10.96%); Recreation and Culture (0.40%); Restaurant and Miscellaneous Goods and Services (0.26%); Clothing and Footwear (0.21%); and Furnishings, Household Equipment and Routine Maintenance of the House (0.06%).

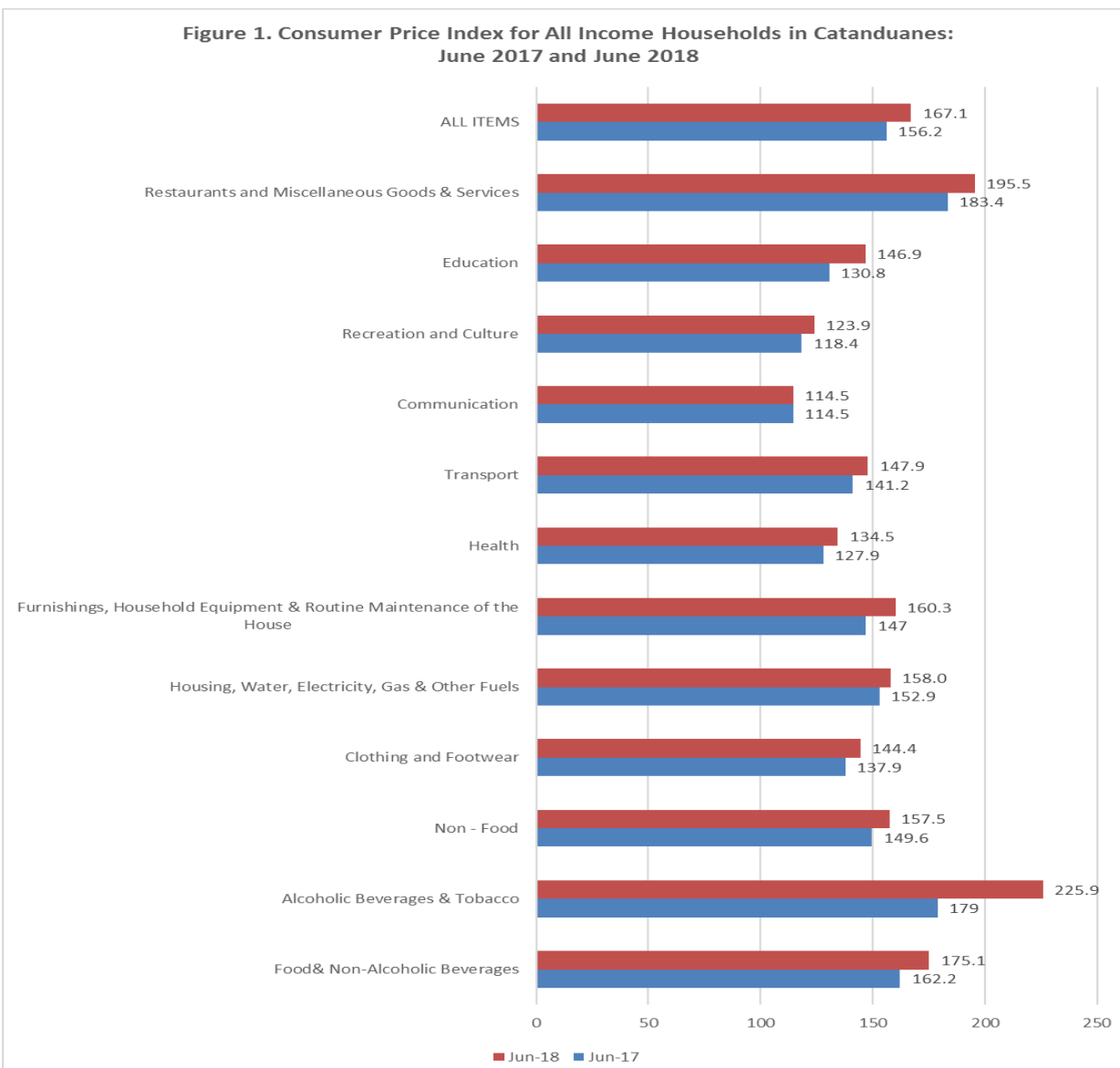
Commodity Groups that experienced decrease in price index points during the month were Housing, Water, Electricity, Gas and Other Fuels (0.38%) and Transport (0.41%).

Health (134.5) and Communication (114.5 commodity groups did not experience any change in price index points during the month of June 2018.

**Table1. Consumer Price Index for All Income Households in Catanduanes  
June 2017 and June 2018**

<b>Commodity Group</b>	<b>June 2017</b>	<b>June 2018</b>	<b>Year on Year Change</b>
Food& Non-Alcoholic Beverages	162.2	175.1	7.95
Alcoholic Beverages & Tobacco	179.0	225.9	26.20
Non - Food	149.6	157.5	5.28
Clothing and Footwear	137.9	144.4	4.71
Housing, Water, Electricity, Gas & Other Fuels	152.9	158.0	3.34
Furnishings, Household Equipment & Routine Maintenance of the House	147.0	160.3	9.05
Health	127.9	134.5	5.16
Transport	141.2	147.9	4.75
Communication	114.5	114.5	0.00
Recreation and Culture	118.4	123.9	4.65
Education	130.8	146.9	12.31
Restaurants and Miscellaneous Goods & Services	183.4	195.5	6.60
<b>ALL ITEMS</b>	<b>156.2</b>	<b>167.1</b>	<b>6.98</b>

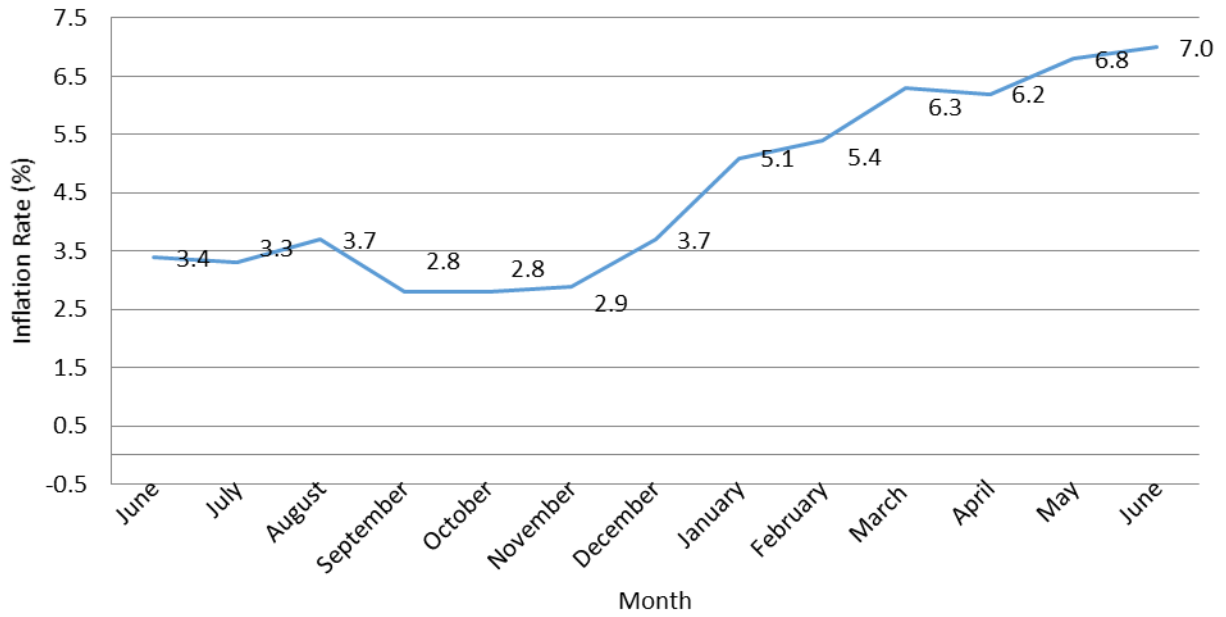
**Figure 1. Consumer Price Index for All Income Households in Catanduanes:  
June 2017 and June 2018**



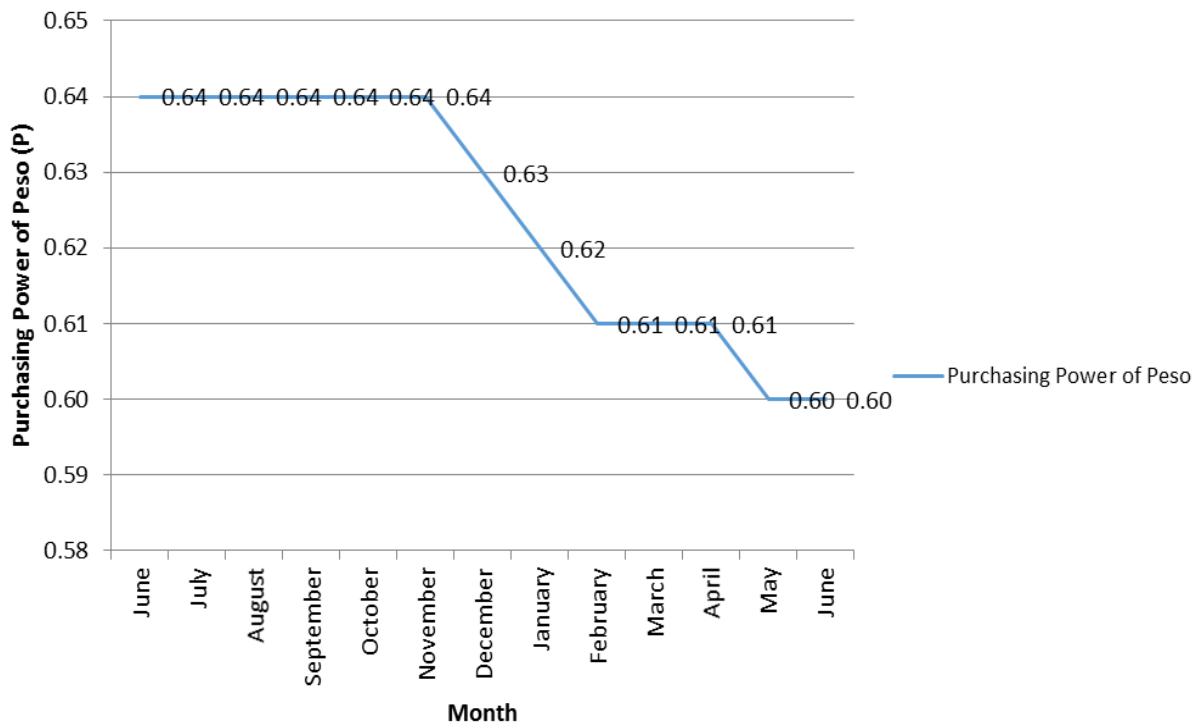
**Table2. Consumer Price Index for All Income Households in Catanduanes (2006-100): May 2018 and June 2018**

COMMODITY GROUP	May-18	June-18	Month-on-Month change
<b>ALL ITEMS</b>	166.4	167.1	0.42
<b>I. FOOD AND NON-ALCOHOLIC BEVERAGES</b>	174.5	175.1	0.34
* Food	176.2	176.9	0.40
Bread and Cereals	182.2	182.1	(0.05)
Rice	191.6	191.1	(0.26)
Corn	347.2	347.2	0.00
Other Cereals, Flour, Cereal Preparation, Bread, Pasta and Other Bakery Products	150.7	151.8	0.72
Meat	159.1	158.1	(0.63)
Fish	177.9	180.9	1.66
Milk, Cheese and Eggs	154.0	155.1	0.71
Oils and Fats	316.9	321.7	1.49
Fruit	187.2	190.1	1.53
Vegetables	161.0	159.7	(0.81)
Sugar, Jam, Honey, Chocolate and Confectionery	119.6	126.3	5.30
Food Products N.E.C.	189.5	188.2	(0.69)
* Non-alcoholic Beverages	141.5	141.8	0.21
<b>II. ALCOHOLIC BEVERAGES AND TOBACCO</b>	225.1	225.9	0.35
Alcoholic Beverages	163.7	165.3	0.97
Tobacco	300.9	300.9	0.00
<b>NON-FOOD</b>	156.6	157.5	0.57
<b>III. CLOTHING AND FOOTWEAR</b>	144.1	144.4	0.21
Clothing	139.2	139.2	0.00
Footwear	155.9	156.7	0.51
<b>IV. HOUSING, WATER, ELECTRICITY, GAS AND OTHER FUELS</b>	158.6	158.0	(0.38)
Actual Rentals for Housing	160.1	160.1	0.00
Maintenance and Repair of the Dwelling	153.2	153.6	0.26
Water Supply and Miscellaneous Services Relating to the Dwelling	117.7	117.7	0.00
Electricity, Gas and Other Fuels	161.2	159.3	(1.19)
<b>V. FURNISHINGS, HOUSEHOLD EQUIPMENT AND ROUTINE MAINTENANCE OF THE HOUSE</b>	160.2	160.3	0.06
Furniture and Furnishings, Carpets and Other Floor Coverings	119.6	119.6	0.00
Household Textiles	128.8	128.8	0.00
Household Appliances	127.1	126.9	(0.16)
Glassware, Tableware and Household Utensils	168.2	168.3	0.06
Tools and Equipment for House and Garden	126.0	126.0	0.00
Goods and Services for Routine Household Maintenance	172.0	172.1	0.06
<b>VI. HEALTH</b>	134.5	134.5	0.00
Medical Products, Appliances and Equipment	135.6	135.6	0.00
Out-patient Services	135.3	135.3	0.00
Hospital Services	123.1	123.1	0.00
<b>VII. TRANSPORT</b>	148.5	147.9	(0.41)
Operation of Personal Transport Equipment	150.3	151.2	0.60
Transport Services	148.1	147.1	(0.68)
<b>VIII. COMMUNICATION</b>	114.5	114.5	0.00
Postal Services			
Telephone and Telefax Equipment	45.3	45.3	0.00
Telephone and Telefax Services	137.6	137.6	0.00
<b>IX. RECREATION AND CULTURE</b>	123.4	123.9	0.40
Audio-visual, Photographic and Information Processing Equipment	101.6	101.6	0.00
Other Major Durables for Recreation and Culture			
Other Recreational Items and Equipment, Gardens and Pets			
Recreational and Cultural Services	100.0	100.0	0.00
Newspapers, Books and Stationery	135.5	136.3	0.59
<b>X. EDUCATION</b>	130.8	146.9	10.96
Pre-primary and Primary Education	174.3	217.1	19.71
Secondary Education	118.1	123.5	4.37
Tertiary Education	100.0	100.0	0.00
Education Not Definable by Level			
<b>XI. RESTAURANT AND MISCELLANEOUS GOODS AND SERVICES</b>	195.0	195.5	0.26
Catering Services	232.7	233.7	0.43
Personal Care	148.7	148.7	0.00
Personal Effects N.E.C.	160.6	160.6	0.00

**Figure 2. Inflation Rate in Catanduanes:  
June 2017 to June 2018**



**Figure 3. Purchasing Power of Peso in Catanduanes:  
June 2017 to June 2018**



# **CONCEPTS AND DEFINITIONS**

## **CONSUMER PRICE INDEX (CPI):**

- \* A measure of the changes in the average price level of goods and services that most people buy for their day-to-day consumption.
- \* It measures the composite change in the consumer prices of various commodities over time.

## **COMPONENTS OF THE CPI:**

- \* *Market basket* -- A sample of the variety of goods and services commonly consumed by an average Filipino household to represent the price behavior of all goods and services bought by consumers.
- \* *Weight* - Value attached to a commodity or group of commodities depending on the magnitude of its contribution to the index.
- \* *Base period* -- A reference date at which the index is equal to 100. Base year is 2006.
- \* *Sample outlets* -- Establishments where prices of commodities are quoted.
- \* *Index methodology* -- Laspeyre's formula = Fixed base year and weights.

## **INFLATION RATE:**

- \* It is the annual rate of change or the year-on-year change in average retail prices.

## **PURCHASING POWER OF THE PESO (PPP):**

- \* It shows how much the peso in the base period is worth in the current period.



**ANNA G. BAJAMUNDI**  
Senior Statistical Specialist  
Officer-in-Charge