



## ***SPECIAL RELEASE***

\*\*\*\*\*

\*

### ***CONSUMER PRICE INDEX FOR ALL INCOME HOUSEHOLDS IN CATANDUANES: MAY 2018***

**Date of Release:** June 7, 2018

**Reference No.** 2018-010

#### **PRICE SITUATION: Year-on-Year**

##### **Inflation Rate (IR) in Catanduanes is at 6.8 in May 2018**

The Inflation Rate (IR) in the province of Catanduanes for May 2018 settled at 6.8 percent which translates to a Purchasing Power of the Peso of P 0.60. It was higher by 3.5 points than the registered inflation rate of 3.3 at the same period last year.

The CPI for all Income Households in all items in Catanduanes for the month of May 2018 was registered at 166.4 index points which is higher than last month's registered index points of 165.1. It is also higher than the 155.8 price index points registered at the same period last year.

#### **PRICE SITUATION: Month-on-Month**

##### **Meat commodity group has the highest increase in CPI for May 2018**

The Food and Non-Alcoholic Beverages commodity group recorded a 174.5 price index points during the month of May 2018 which is higher than the last month's recorded price index points of 173.1. Meat commodity group had the highest increase in CPI recorded at 3.39 price index points. Other commodity groups that recorded increase during the month were Other Cereals, Flour, Cereal Preparation, Bread, Pasta and Other Bakery Products (3.19%); Fruit (2.03%); Food Products N.E.C. (1.69%); Non-alcoholic Beverages (1.55%); Fish (1.35%); Milk, Cheese and Eggs (1.23%); and Bread and Cereals (0.33%);

##### **Vegetables commodity group has the highest decline in CPI in May 2018**

CPI for Vegetable commodity group in May 2018 had the highest decrease recorded at 3.11 price index points. Other commodity groups that experienced decrease in price index points during the month were Sugar, Jam, Honey, Chocolate and Confectionery (0.42%); and Rice (0.31%).

Commodity groups that did not experience any change in price index points for May 2018 were Corn; and Oils and Fats.

##### **Alcoholic, Beverages and Tobacco commodity group experience increased in CPI for May 2018**

CPI for Alcoholic, Beverages and Tobacco commodity group in May 2018 recorded an increase of 1.91 price index points during the month.

##### **Restaurant and Miscellaneous Goods and Services commodity group headlines non-food commodity groups that experience increase in CPI in May 2018**

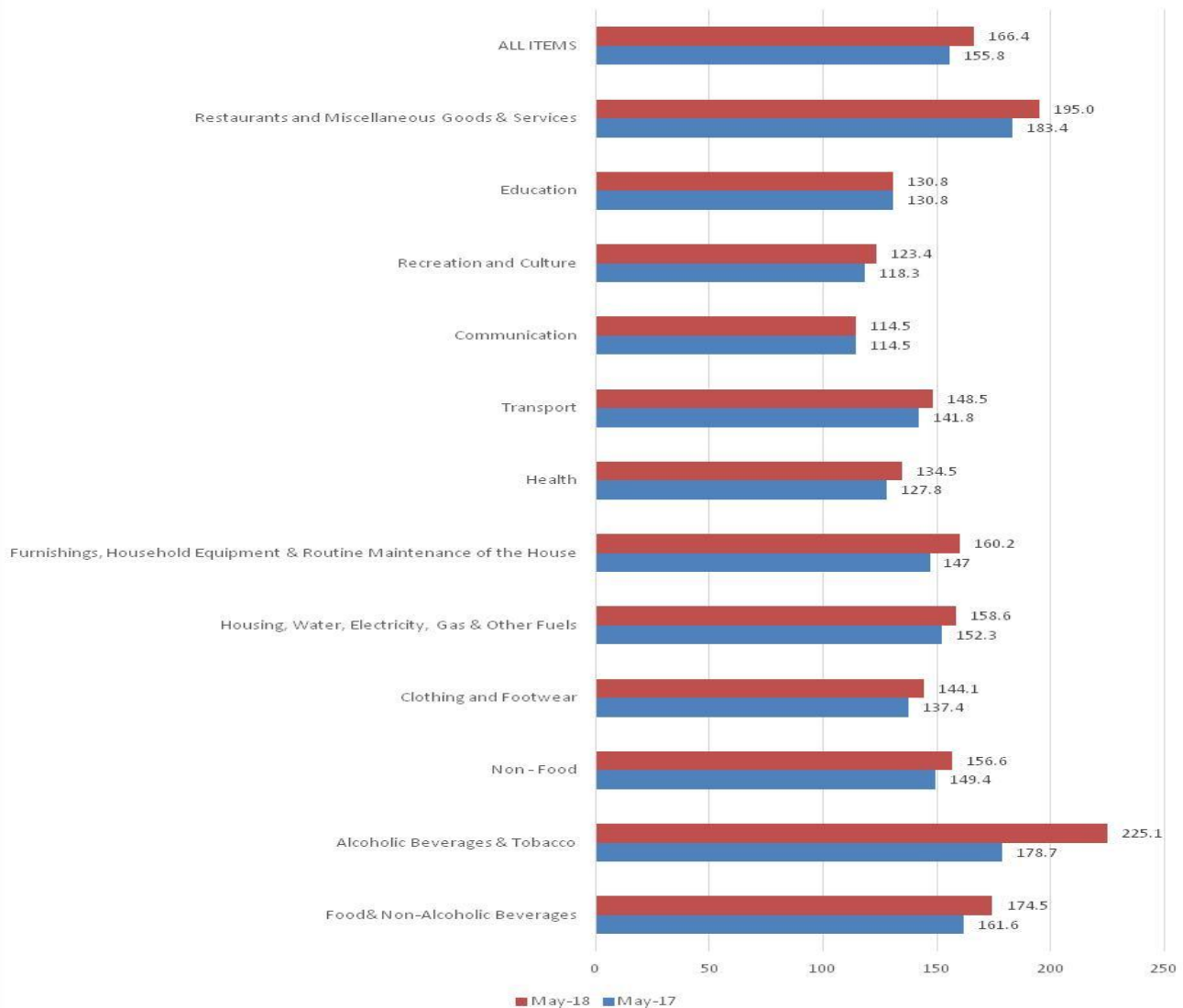
Non-food Commodity Groups that recorded an increase in price index points during the month were Restaurant and Miscellaneous Goods and Services (1.85%); Recreation and Culture (1.38%); Housing, Water, Electricity, Gas and Other Fuels (0.38%); Health (0.22%); Clothing and Footwear (0.21%); and Transport (0.20%).

Furnishings, Household Equipment and Routine Maintenance of the House; Communication and Education commodity groups did not experience any change in price index points during the month of May 2018.

**Table1. Consumer Price Index for All Income Households in Catanduanes  
May 2017 and May 2018**

<b>Commodity Group</b>	<b>May 2017</b>	<b>May 2018</b>	<b>Year on Year Change</b>
Food& Non-Alcoholic Beverages	161.6	174.5	7.98
Alcoholic Beverages & Tobacco	178.7	225.1	25.97
Non - Food	149.4	156.6	4.82
Clothing and Footwear	137.4	144.1	4.88
Housing, Water, Electricity, Gas & Other Fuels	152.3	158.6	4.14
Furnishings, Household Equipment & Routine Maintenance of the House	147.0	160.2	8.98
Health	127.8	134.5	5.24
Transport	141.8	148.5	4.72
Communication	114.5	114.5	0.00
Recreation and Culture	118.3	123.4	4.31
Education	130.8	130.8	0.00
Restaurants and Miscellaneous Goods & Services	183.4	195.0	6.32
<b>ALL ITEMS</b>	<b>155.8</b>	<b>166.4</b>	<b>6.80</b>

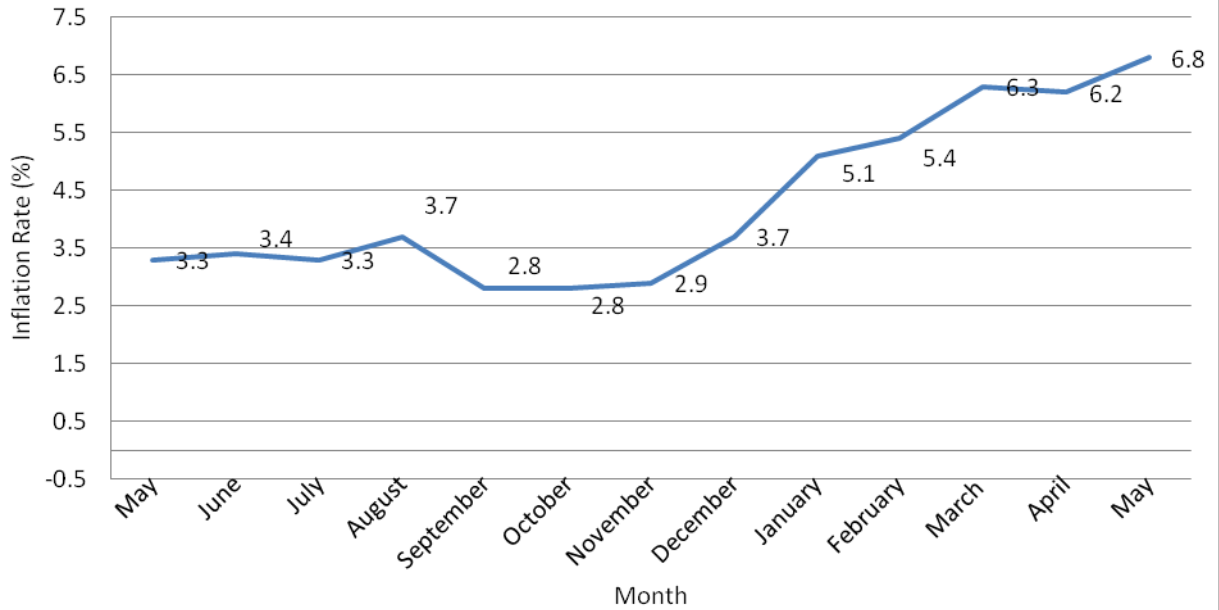
**Figure 1. Consumer Price Index for All Income Households in Catanduanes:  
May 2017 and May 2018**



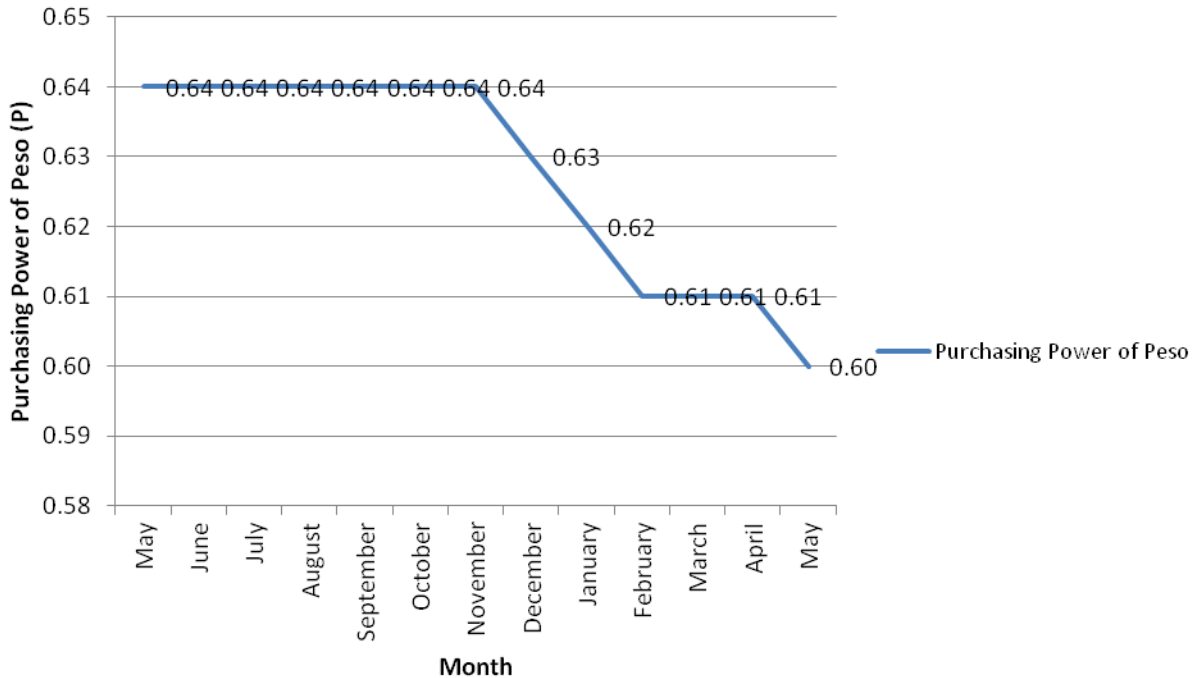
**Table2. Consumer Price Index for All Income Households in Catanduanes (2006-100): April 2018 and May 2018**

COMMODITY GROUP	Apr-18	May-18	Month-on-Month change
<b>ALL ITEMS</b>	165.1	166.4	0.78
<b>I. FOOD AND NON-ALCOHOLIC BEVERAGES</b>	173.1	174.5	0.80
<b>* Food</b>	174.9	176.2	0.74
Bread and Cereals	181.6	182.2	0.33
Rice	192.2	191.6	(0.31)
Corn	347.2	347.2	0.00
Other Cereals, Flour, Cereal Preparation, Bread, Pasta and Other Bakery Products	145.9	150.7	3.19
Meat	153.7	159.1	3.39
Fish	175.5	177.9	1.35
Milk, Cheese and Eggs	152.1	154.0	1.23
Oils and Fats	316.9	316.9	0.00
Fruit	183.4	187.2	2.03
Vegetables	166.0	161.0	(3.11)
Sugar, Jam, Honey, Chocolate and Confectionery	120.1	119.6	(0.42)
Food Products N.E.C.	186.3	189.5	1.69
* Non-alcoholic Beverages	139.3	141.5	1.55
<b>II. ALCOHOLIC BEVERAGES AND TOBACCO</b>	220.8	225.1	1.91
Alcoholic Beverages	163.5	163.7	0.12
Tobacco	291.6	300.9	3.09
<b>NON-FOOD</b>	155.6	156.6	0.64
<b>III. CLOTHING AND FOOTWEAR</b>	143.8	144.1	0.21
Clothing	139.1	139.2	0.07
Footwear	155.1	155.9	0.51
<b>IV. HOUSING, WATER, ELECTRICITY, GAS AND OTHER FUELS</b>	158.0	158.6	0.38
Actual Rentals for Housing	160.1	160.1	0.00
Maintenance and Repair of the Dwelling	151.3	153.2	1.24
Water Supply and Miscellaneous Services Relating to the Dwelling	117.7	117.7	0.00
Electricity, Gas and Other Fuels	159.7	161.2	0.93
<b>V. FURNISHINGS, HOUSEHOLD EQUIPMENT AND ROUTINE MAINTENANCE OF THE HOUSE</b>	160.2	160.2	0.00
Furniture and Furnishings, Carpets and Other Floor Coverings	119.6	119.6	0.00
Household Textiles	128.8	128.8	0.00
Household Appliances	127.1	127.1	0.00
Glassware, Tableware and Household Utensils	168.2	168.2	0.00
Tools and Equipment for House and Garden	126.0	126.0	0.00
Goods and Services for Routine Household Maintenance	171.9	172.0	0.06
<b>VI. HEALTH</b>	134.2	134.5	0.22
Medical Products, Appliances and Equipment	135.3	135.6	0.22
Out-patient Services	135.3	135.3	0.00
Hospital Services	123.1	123.1	0.00
<b>VII. TRANSPORT</b>	148.2	148.5	0.20
Operation of Personal Transport Equipment	148.4	150.3	1.26
Transport Services	148.1	148.1	0.00
<b>VIII. COMMUNICATION</b>	114.5	114.5	0.00
Postal Services			
Telephone and Telefax Equipment	45.3	45.3	0.00
Telephone and Telefax Services	137.6	137.6	0.00
<b>IX. RECREATION AND CULTURE</b>	121.7	123.4	1.38
Audio-visual, Photographic and Information Processing Equipment	101.6	101.6	0.00
Other Major Durables for Recreation and Culture			
Other Recreational Items and Equipment, Gardens and Pets			
Recreational and Cultural Services	100.0	100.0	0.00
Newspapers, Books and Stationery	133.0	135.5	1.85
<b>X. EDUCATION</b>	130.8	130.8	0.00
Pre-primary and Primary Education	174.3	174.3	0.00
Secondary Education	118.1	118.1	0.00
Tertiary Education	100.0	100.0	0.00
Education Not Definable by Level			
<b>XI. RESTAURANT AND MISCELLANEOUS GOODS AND SERVICES</b>	191.4	195.0	1.85
Catering Services	226.8	232.7	2.54
Personal Care	147.8	148.7	0.61
Personal Effects N.E.C.	160.6	160.6	0.00

**Figure 2. Inflation Rate in Catanduanes:  
May 2017 to May 2018**



**Figure 3. Purchasing Power of Peso in Catanduanes:  
May 2017 to May 2018**



# CONCEPTS AND DEFINITIONS

## CONSUMER PRICE INDEX (CPI):

- \* A measure of the changes in the average price level of goods and services that most people buy for their day-to-day consumption.
- \* It measures the composite change in the consumer prices of various commodities over time.

## COMPONENTS OF THE CPI:

- \* *Market basket* -- A sample of the variety of goods and services commonly consumed by an average Filipino household to represent the price behavior of all goods and services bought by consumers.
- \* *Weight* - Value attached to a commodity or group of commodities depending on the magnitude of its contribution to the index.
- \* *Base period* -- A reference date at which the index is equal to 100. Base year is 2006.
- \* *Sample outlets* -- Establishments where prices of commodities are quoted.
- \* *Index methodology* -- Laspeyre's formula = Fixed base year and weights.

## INFLATION RATE:

- \* It is the annual rate of change or the year-on-year change in average retail prices.

## PURCHASING POWER OF THE PESO (PPP):

- \* It shows how much the peso in the base period is worth in the current period.



**ANNA G. BAJAMUNDI**  
Senior Statistical Specialist  
Officer-in-Charge